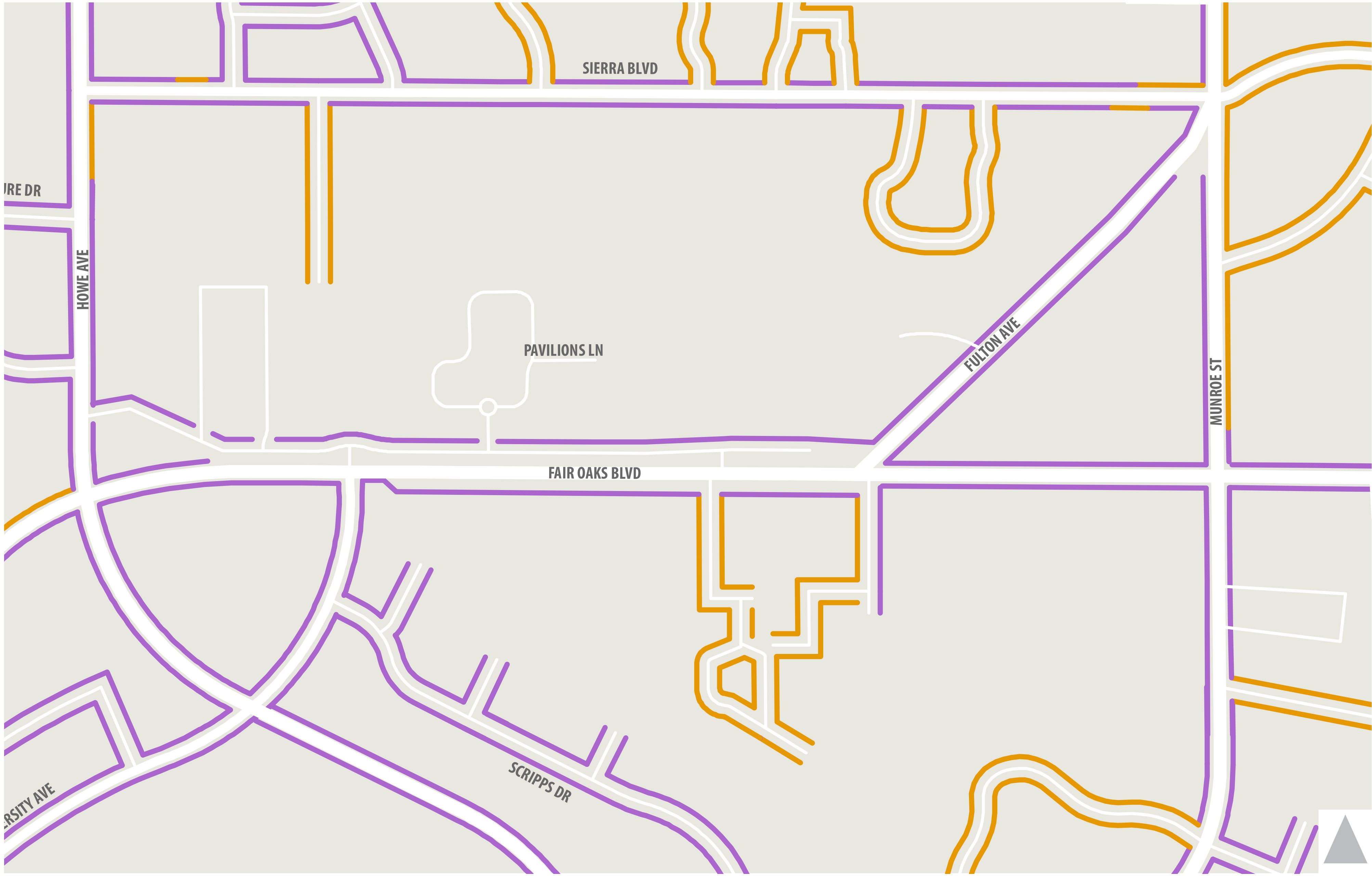


Existing Pedestrian Facilities and Level of Traffic Stress

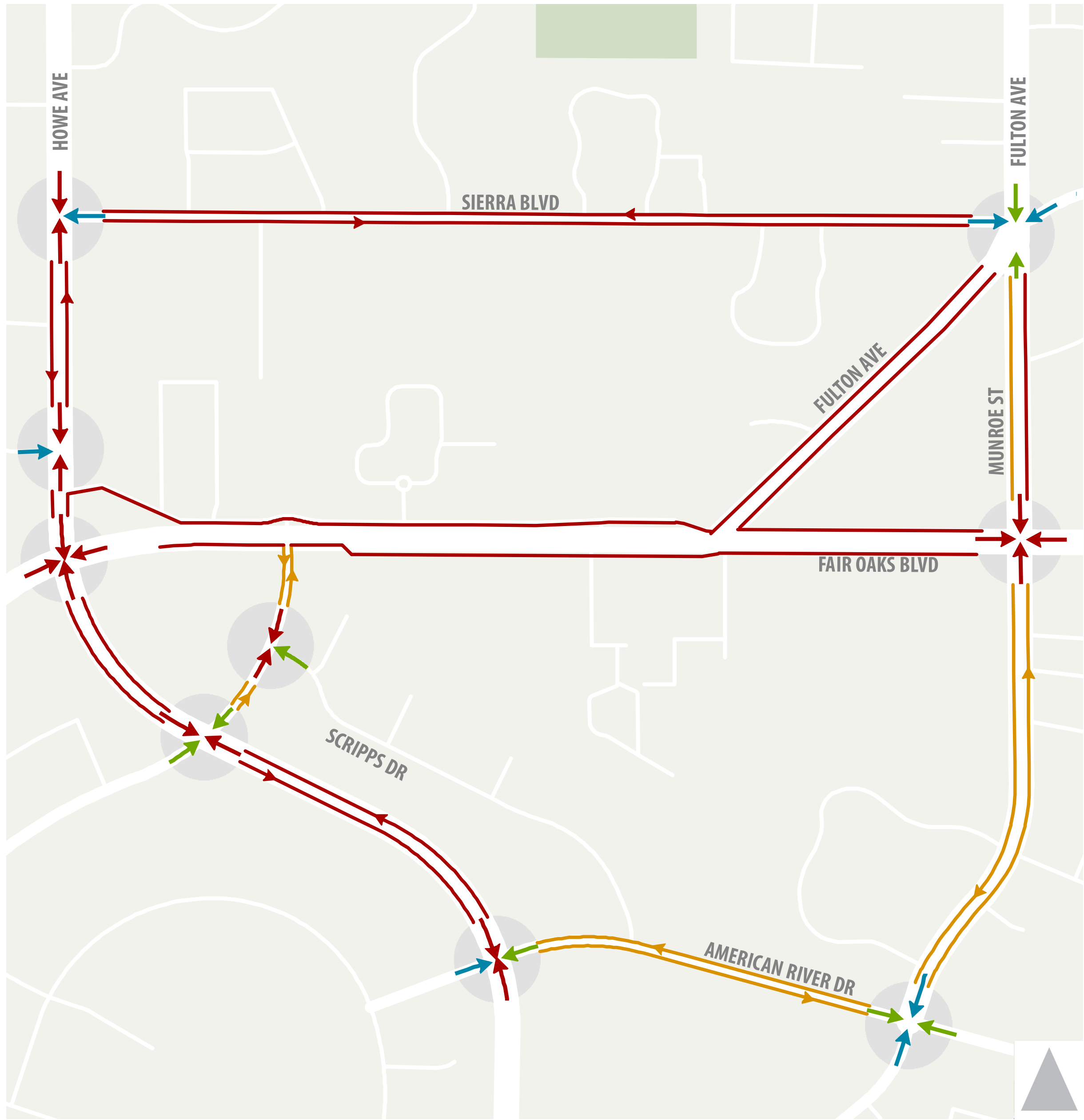


Existing Pedestrian Facilities



- Sidewalk Inventory**
- Sidewalk
 - No Sidewalk

Level of Traffic Stress (LTS)



- Intersection LTS**
- ← Highly Comfortable
 - ← Generally Comfortable
 - ← Uncomfortable But Possible
 - ← Very Uncomfortable or Impossible
- Roadway LTS**
- Highly Comfortable
 - Generally Comfortable
 - Uncomfortable But Possible
 - Very Uncomfortable or Impossible

The pedestrian LTS arrows point to the crossing segments pedestrians use at each intersection.