

Note: Details and dimensions not shown for spans 3 & 4 are similar to those shown for spans 1 & 2.

**GENERAL NOTES**

**Specifications:**  
Design: A.A.S.H.O. dated 1957  
Construction: Specifications of the County of Sacramento

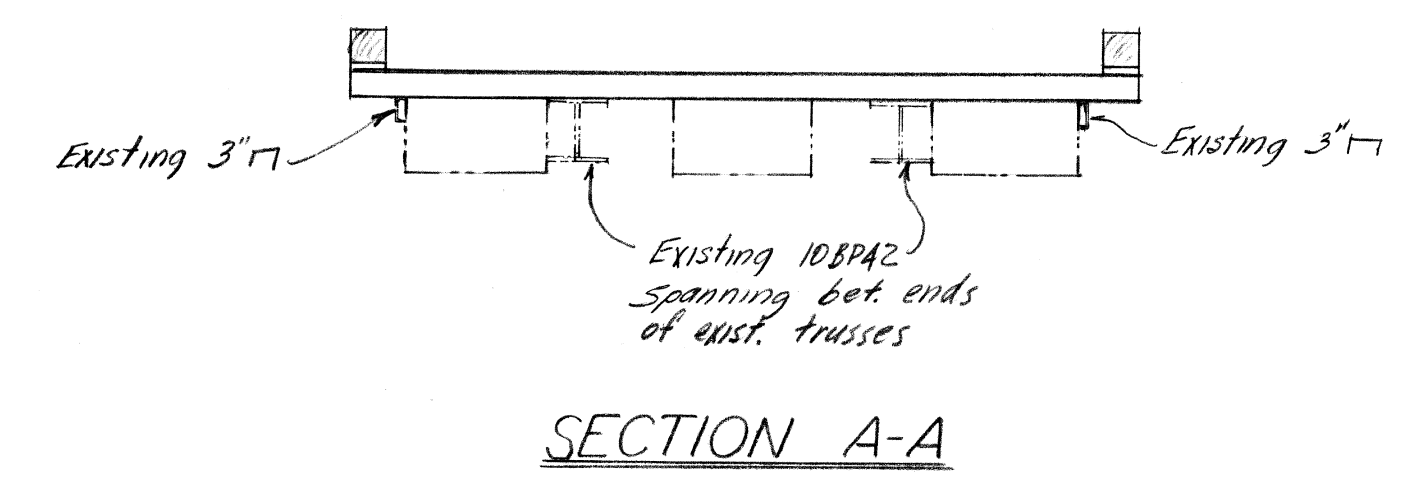
**Live Loading:** H-20

**Prestressed Concrete:**  
Rocklite aggregate or equal shall be used. Max weight of concrete not to exceed 100 pounds per cu. ft.  
 $f_c = 3,500$  p.s.i. at time of transfer.  
 $f_c = 4,500$  p.s.i. at 28 days.

**Timber:**  
Wheel guards to be Douglas Fir, Construction grade as per Paragraph 125 in the "Standard Grading and Dressing Rules" of the West Coast Lumbermen's Association.

**Prestressing Strands:**  
3/8" strands shall be uncoated high tensile cold drawn wire strand. Strand shall have a minimum ultimate tensile strength of 250,000 p.s.i. and an elongation at rupture of not less than 4% in 24". All wire shall be stress relieved.

**Structural Steel:**  $f_s = 18,000$  p.s.i.



**APPROXIMATE QUANTITIES**

Furnish Deck Units	64 Ea.
Erect Deck Units	64 Ea.
Timber Wheel Guards	709 L.F.
Salvage & Reset Exist. Railing. (700 L.F.)	Lump Sum
Remove Existing Deck	Lump Sum
Furnish & Erect Bent	Lump Sum

COSUMNES RIVER BRIDGE  
AT MICHIGAN BAR  
REDECKING DETAILS NO. 1

SACRAMENTO COUNTY ENGINEERS OFFICE  
SHEET NO. 1 of 3 DATE: 11-24-58 SCALE: As Noted

BRIDGE NO. PQ-12-B-2.80 APPROVED: [Signature] ASST. COUNTY ENGINEER RE. 7740

U035 92 43

3-1-2 71-73  
3-1-2 71

XXXX

14-2-1 8C7009